

## WNPL Well Nut

Neoprene · Large flange  
M3 - M6

Well Nut threaded insert is a flanged neoprene rubber bushing with a brass machine nut moulded into one end. Tightening a conventional machine screw threaded in the brass nut causes the insert to expand, making a secure fastening.

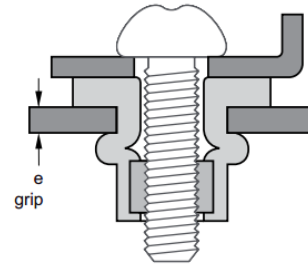
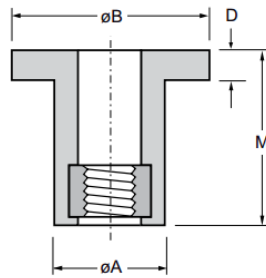


### Features

- Provides an excellent vibration-isolating effect to absorb vibration and noise
- Ability to seal liquids and gases, particularly suited for use in low pressure environments
- Exhibits excellent electrical insulation properties
- Large flange feature increases the bearing surface for weaker/thinner materials
- Multiple base materials can be fastened effectively
- Stable fastening strength can be achieved even in a blind hole or deep hole
- Available in a neoprene-rubber as standard or EPDM. Neoprene-rubber offers stable strength and exhibits average levels of all beneficial properties. EPDM is particularly suitable in an outdoor environment where the nut must provide weather resistance, ozone resistance etc.
- Installed when the mating screw is tightened using a screwdriver to recommended torque.

### Material

- Body: Neoprene
- Insert: Brass



Part No.	Thread Size	Grip Range		Hole Size	øA	øB	D	M	Tightening Torque
		min.	max.						Nm nom.
WNPL-0324-C632	M3 x 0.5	9.50	13.0	6.3	6.1	14.0	0.9	24.9	0.4
WNPL-0413-C832	M4 x 0.7	0.40	4.40	8.1	7.9	19.1	1.5	14.2	0.3
WNPL-0516-G1032	M5 x 0.8	0.80	5.80	9.8	9.6	19.0	4.7	21.0	0.5
WNPL-0516-J1032							2.0		
WNPL-0615-D1420	M6 x 1.0	0.80	4.70	12.9	12.7	19.1	4.8	21.1	0.9



### Can't find what you are looking for?

We can provide unique and customized solutions.  
Contact your nearest [Gripwell](#) team for assistance!